

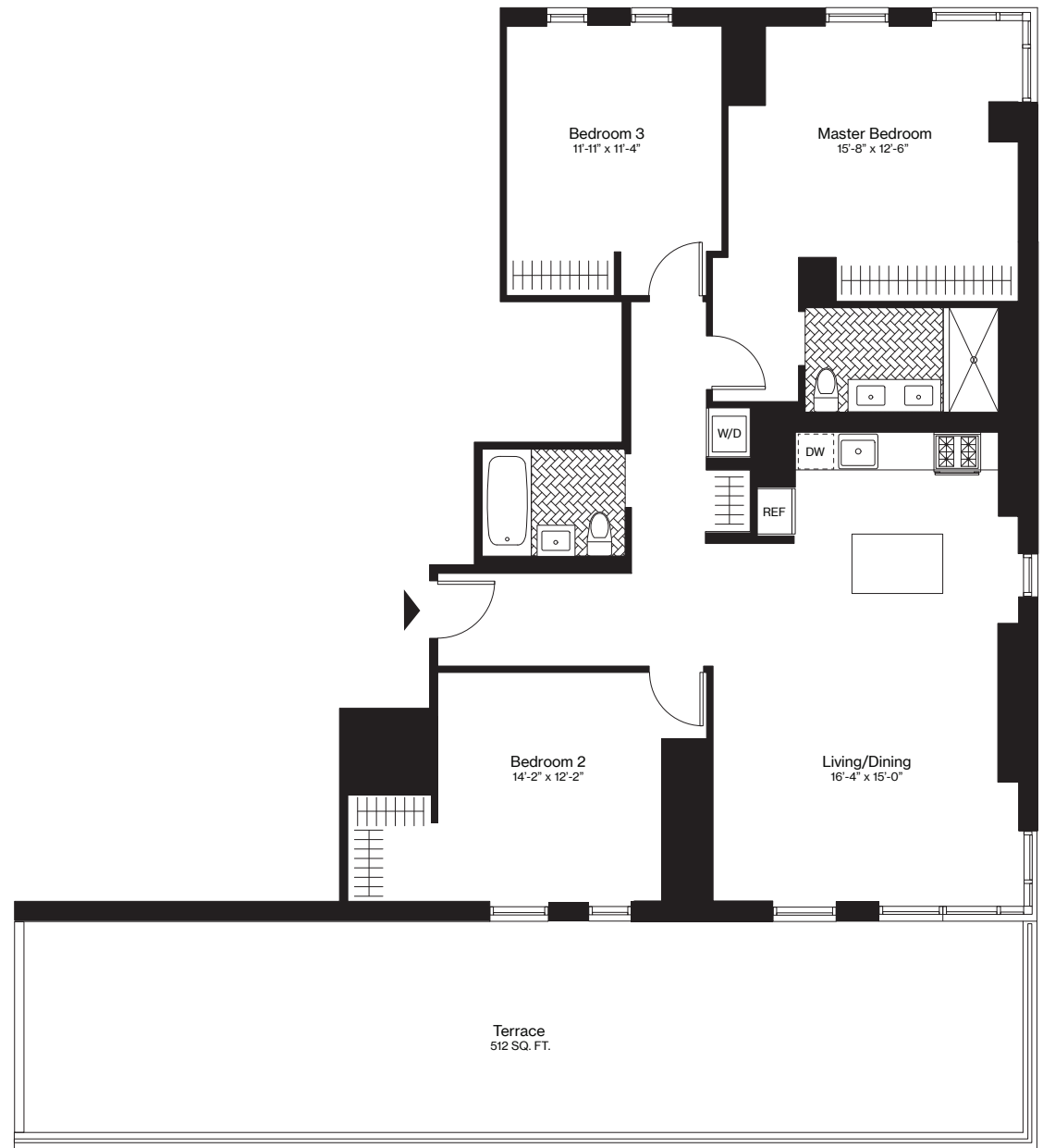
# THE AMBERLY *B, 32nd Floor*

3 Bedrooms

2 Bathrooms

Indoor Area: 1,471 Square Feet

Terrace: 512 Square Feet



The Amberly  
120 Nassau St.  
Brooklyn, NY  
11201

Visit our Leasing Office:  
718.246.1200  
theamberlybk.com  
info@theamberlybk.com

